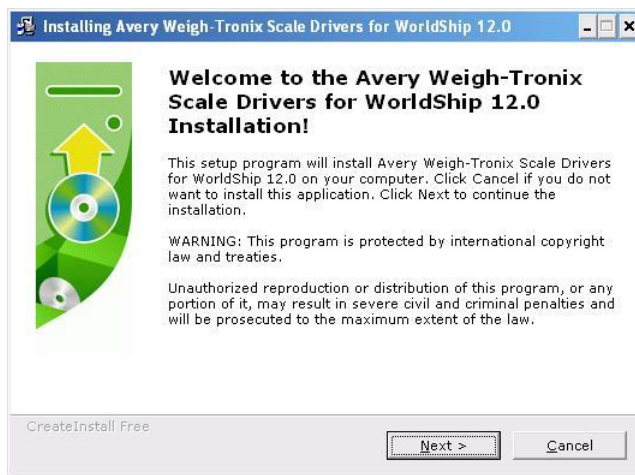
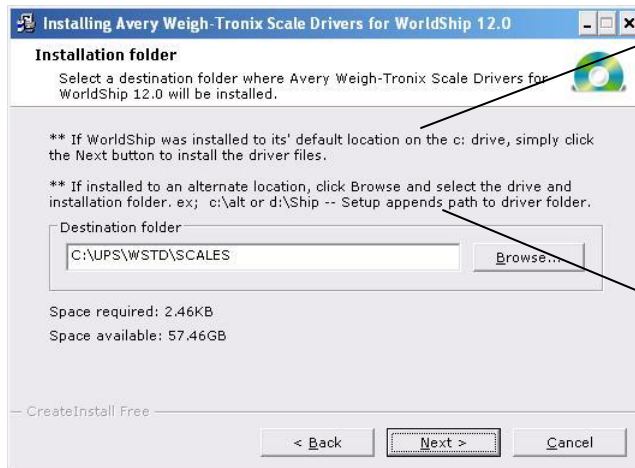


How-To Install Scale Drivers for UPS WorldShip 2010

- 1) Download **AWTXWS12.ZIP** from [here](#) to any convenient folder or the desktop.
- 2) Unzip the file (typically by right-clicking on the file icon and selecting **Extract All...**)
- 3) Double-click on the **setup.exe** file icon to start the installation.
- 4) Welcome screen is displayed... click the **Next** button.



- 5) Prompts to select the driver destination folder



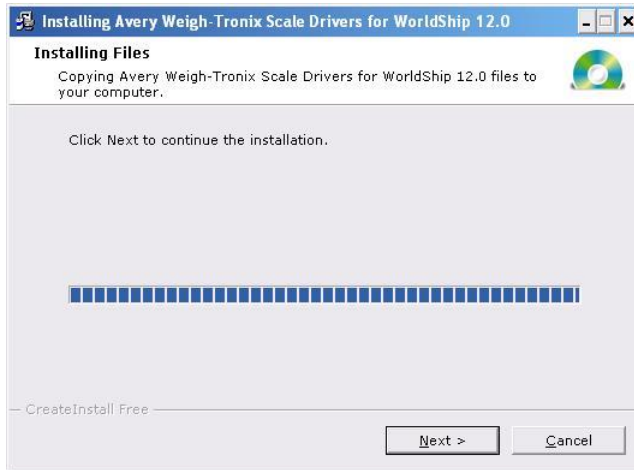
If WorldShip was installed in its' default location on the c: drive, simply click the **Next** button and the drivers will be installed in the c:\UPS\WSTD\SCALES folder.

IMPORTANT: If WorldShip was installed to an alternate location, for example to c:\alternate or d:\Shipping then click the **Browse** button and select the drive and folder where it was installed.

The setup program will automatically append the path to where the drivers should be installed, for example to c:\alternate\UPS\WSTD\SCALES or d:\Shipping\UPS\WSTD\SCALES

Click the **Next** button.

6) Files are copied to the installation folder... click the **Next** button.



7) Installation is complete... click the **Finish** button.



Scale drivers are located on the Salter Brecknell website at:

http://www.salterbrecknell.com/index.php?option=com_content&task=view&id=9&Itemid=16

sales@salterbrecknell.com
1-800-637-0529

service@salterbrecknell.com
1-800-242-2807