

How-To Install OPOSScale CCO (v1.13)

Installation of this driver update is optional.

The OPOS driver package (SOPACK) from the Salter Brecknell web site provides legacy support for connecting scales from Avery Weigh-Tronix to OPOS-compliant POS systems. When downloaded and installed, the driver package actually places two ActiveX components and one executable administration program on your computer:

- | | |
|---|---------------------------------|
| 1) WTScaleSO.DLL (v1.6, OPOS Scale Service Object) | Developed by Avery Weigh-Tronix |
| 2) OPOSScale.OCX (v1.6, OPOS Scale Common Control Object) | Developed by OPOS committee |
| 3) WTScaleAdmin (v2, AWTX Scale SO Administration Utility) | Developed by Avery Weigh-Tronix |

Since the original release of the OPOS driver package support by Avery Weigh-Tronix in 2002, several changes have occurred to the Scale Service Object and Scale Common Control Object specifications bringing the current release to v1.13. All revisions (including up to v1.13) have remained back compatible with v1.6.

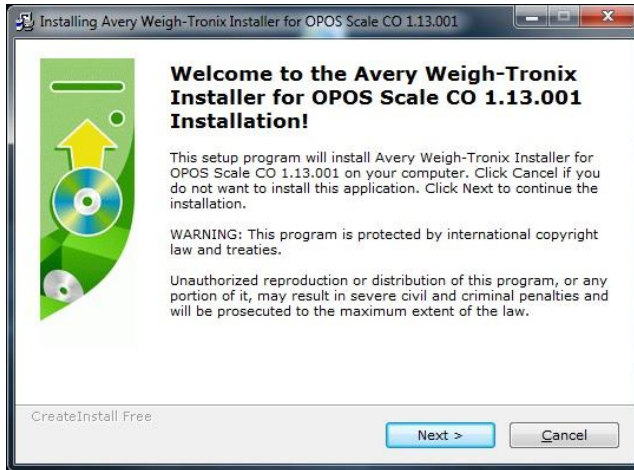
You may continue to use the legacy (v1.6) installation even if all other POS-device 'common control objects' in your POS system use the latest version of drivers. As long as your POS application does not specifically require any of the features or upgrades added in post-(v1.6) revisions. There is no formal requirement to have all CCO's use the same version/revision number.

This OPOSScale CCO (v1.13) installation package is provided mainly for your convenience. This version of the CCO is the exact same control provided in the 1.13.001 CCO Runtime (ZIP File) release of 2010/03/01 provided by RCS; A Division of NCR; Dayton, Ohio, and as developed by MCS, Inc. which installs all POS-device drivers.

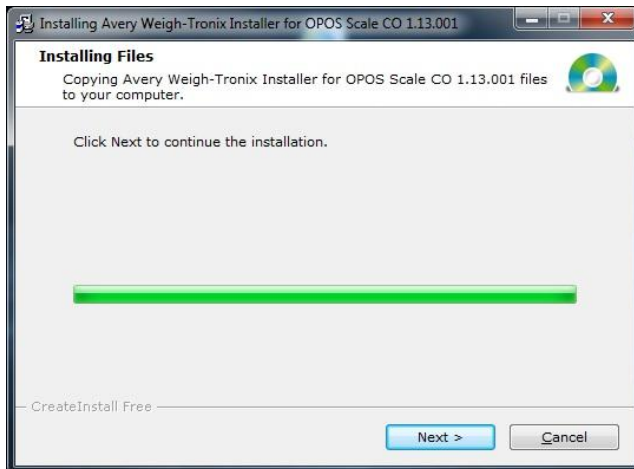
Since the order in which you install the WTScaleAdmin program, (with its v1.6 WTScaleSO driver) and the full OPOS POS-device common control objects package, could affect which version of the scale drivers is actively registered, this CCO (v1.13) installation package lets you make sure that the scale CCO driver in use is (v1.13) should you prefer to use it. Note however, that the WTScaleSO scale service object provided by Avery Weigh-Tronix will remain as (v1.6).

Assuming that you have decided that you want the **OPOSScale** common control object on your computer to be (v1.13), then you can follow the simple installation steps:

- 1) Click the **CCO113** icon from [here](#) to download the **OPOSScale CCO (v1.13) Setup.ZIP** file to any convenient folder or the desktop on your computer.
- 2) Unzip the file (typically by right-clicking on the file icon and selecting **Extract All...**)
- 3) Double-click on the **Setup.exe** file icon in the unzipped folder to start the installation.
- 4) Welcome screen is displayed... click the **Next** button.



5) Files are copied to the installation folder... click the **Next** button.



6) Installation is complete... click the **Finish** button.



Note:

If you would like to undo this installation and revert back to using the legacy (v1.6) version of the scale common control object, then simply re-run the **WTSaleAdmin** installation.

Scale drivers are located on the Salter Brecknell website at:

http://www.salterbrecknell.com/index.php?option=com_content&task=view&id=9&Itemid=16

sales@salterbrecknell.com
1-800-637-0529

service@salterbrecknell.com
1-800-242-2807